



Rancho San Joaquin

1971

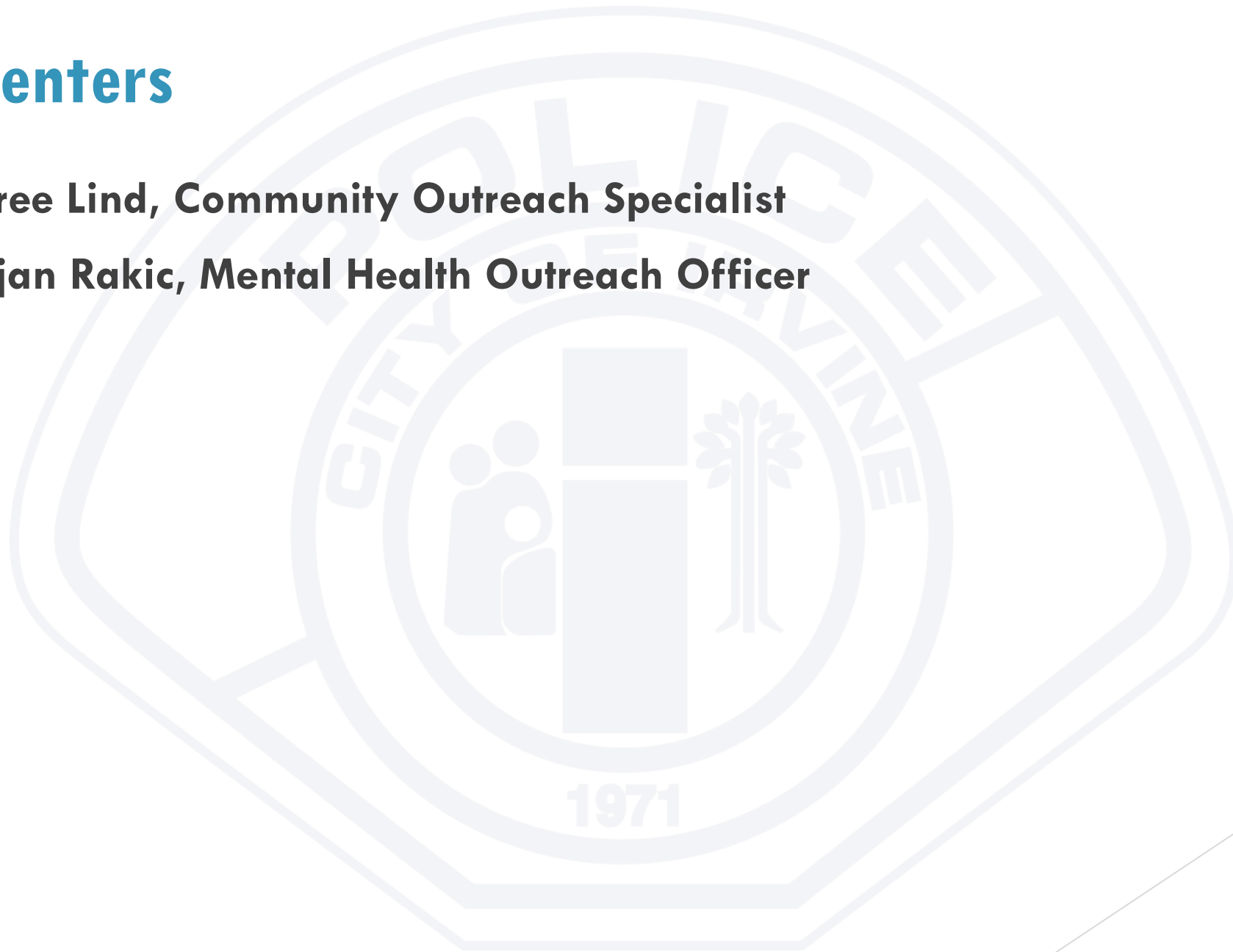
Presented by:

Irvine Police Department

September 2024

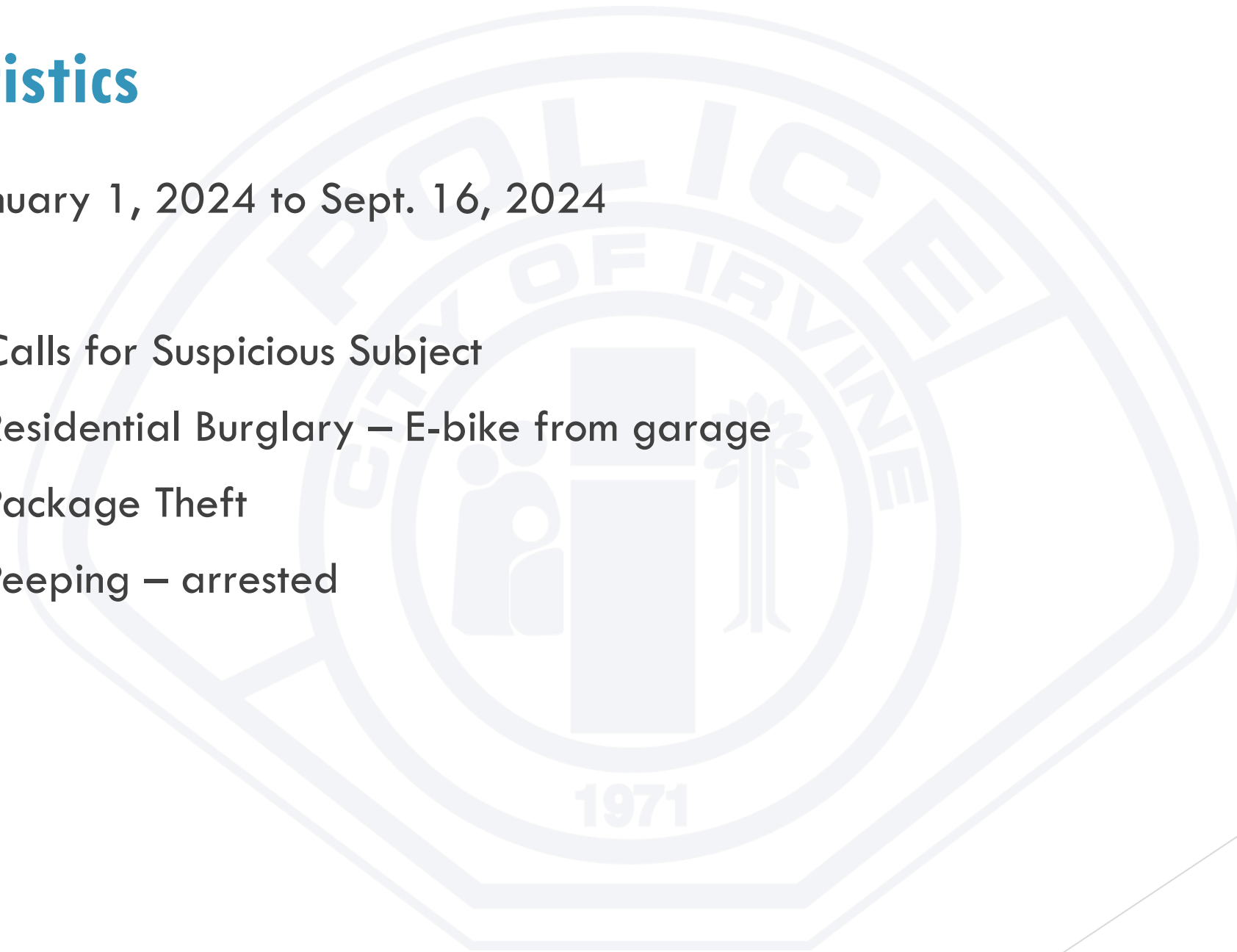
Presenters

- ▶ **Shiree Lind, Community Outreach Specialist**
- ▶ **Miljan Rakic, Mental Health Outreach Officer**



Statistics

- ▶ January 1, 2024 to Sept. 16, 2024
- ▶ 3 Calls for Suspicious Subject
- ▶ 1 Residential Burglary – E-bike from garage
- ▶ 1 Package Theft
- ▶ 1 Peeping – arrested



Vehicle Security

- ▶ RIOLI (Remove It or Lose It)
 - ▶ Only take what you need with you
 - ▶ Keep all valuables out of sight
 - ▶ Conceal items before arriving at your destination
 - ▶ Lock your car and roll up your windows
- ▶ Catalytic convertors
 - ▶ platinum (Pt), palladium (Pd), rhodium (Rh)
 - ▶ Park in your carports
 - ▶ This will make additional vehicles in the community easier to spot

REMOVE IT



OR LOSE IT

Don't be an easy target for opportunistic criminals. Lock your vehicle and remove your valuables from view.

- GPS devices
- Cellphones
- Purses and wallets
- Laptop computers
- Portable video games
- Gifts
- Cameras
- Cash and credit cards
- Paperwork and receipts
- Sunglasses
- Jewelry and other valuables

For more crime prevention tips, visit irvinepd.org or call 949-724-7000.



IRVINE POLICE DEPARTMENT

One Civic Center Plaza • Irvine, CA 92606
949-724-7000 • irvinepd.org

In Partnership with the Community



Package Thefts

- ▶ Check for packages and mail daily
- ▶ Notifications and Tracking
- ▶ Ship to store or access points
- ▶ Neighbors



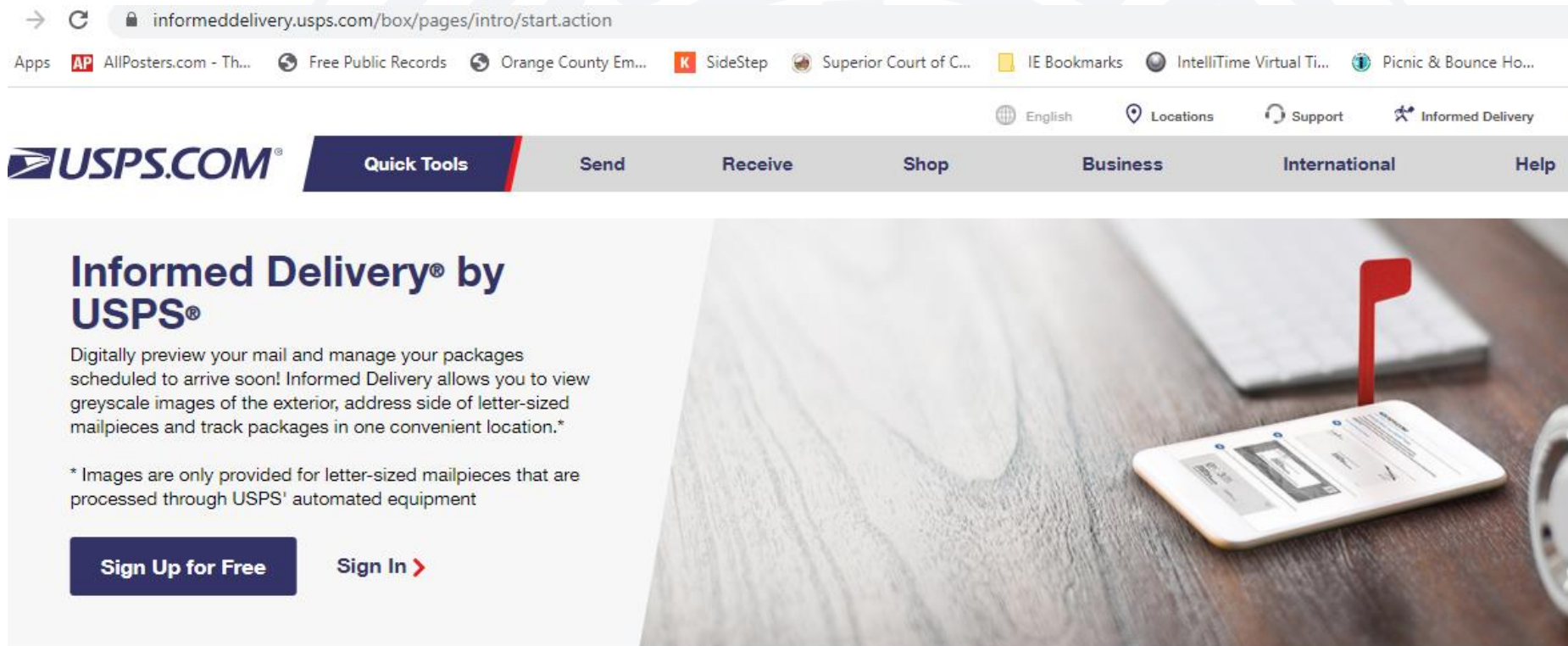


IRVINE PD



USPS Informed Delivery

<https://Informedelivery.USPS.com>



The screenshot shows the USPS Informed Delivery website. At the top, there is a browser address bar with the URL `informedelivery.usps.com/box/pages/intro/start.action`. Below the address bar is a navigation bar with the USPS logo and several menu items: **Quick Tools**, **Send**, **Receive**, **Shop**, **Business**, **International**, and **Help**. The main content area features a large heading: **Informed Delivery® by USPS®**. Below this heading is a paragraph: "Digitally preview your mail and manage your packages scheduled to arrive soon! Informed Delivery allows you to view greyscale images of the exterior, address side of letter-sized mailpieces and track packages in one convenient location.*". A smaller paragraph below that reads: "* Images are only provided for letter-sized mailpieces that are processed through USPS' automated equipment". At the bottom of this section are two buttons: **Sign Up for Free** and **Sign In >**. The background of the main content area is a photograph of a smartphone displaying the Informed Delivery app interface, with a red flag icon on the screen.



1. Create Your Account



2. Verify Your Identity



3. Receive Notifications

Distraction Thefts

- ▶ Purses targeted primarily at the grocery store
- ▶ Wear your purse in front of you
- ▶ Only carry with you what you need
- ▶ Leave all other valuables secured at home
- ▶ Asking for directions
- ▶ **Keep people 6 ft away from you like you did for Covid**
 - ▶ Jewelry switch scams



SECURE

YOUR BELONGINGS

KEEP AN EYE ON IT

Your belongings can be taken in an instant

ZIP IT UP!

It's easy to steal a wallet from your unzipped purse

HOLD IT TIGHT

Clutch your belongings close or wear diagonal straps across your body

Purse Snatch



Jewelry Switch Scams

- ▶ What is it?
 - ▶ Criminals working in pairs or more
 - ▶ Approach victims in public
 - ▶ Use a ruse of asking for directions or help
 - ▶ **Keep people 6 ft away from you like you did for Covid**
 - ▶ Report this crime immediately by calling 911



Bike Registration – Project529

- ▶ Register your bike at www.Project529.com/irvine
- ▶ Lock them up even when they are in your garage



Crime Prevention Focusing on Your Home

- ▶ Looking through the eyes of a criminal
 - ▶ Is it dark?
 - ▶ Flood lights – front and back
- ▶ Does your house look lived in?
 - ▶ Lights and televisions on alternating timers or sensors
 - ▶ Track your mail and package deliveries
 - ▶ Mail and advertisements picked up
 - ▶ Cars in and out of the driveway
 - ▶ Ask a neighbor to assist when you are on vacation
 - ▶ Bring in trash cans



Crime Prevention Tips

- ▶ Safety deposit box
- ▶ Know your neighbors
- ▶ Put away ladders and tools that can be used to enter your home
- ▶ Inventory your belongings
 - ▶ Serial numbers
 - ▶ Photos
 - ▶ Receipts



Video and Alarms

- ▶ Do you have video cameras?
- ▶ Can you see the footage on your phone?
- ▶ How long is your video stored for?
- ▶ Do you know how to retrieve the video?
- ▶ Do you have an alarm system?
 - ▶ Do you test it regularly?
 - ▶ How does it work?
 - ▶ Does it have a two way voice option? Voice commands?
 - ▶ Does it have live monitoring by you or a dispatcher?



Cameras

Sentry Mode in Teslas or Gear Guard in Rivians



Counter Surveillance Cameras



Security Film



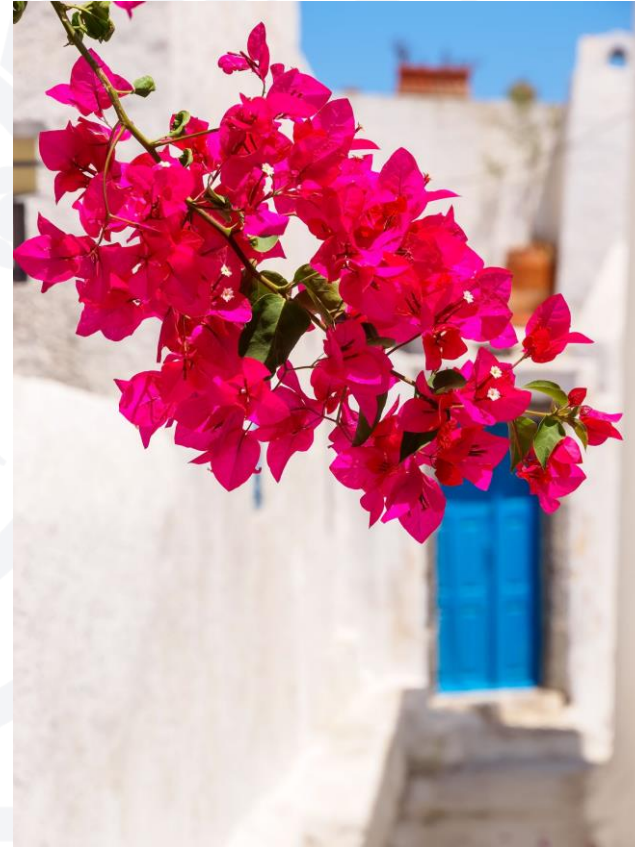
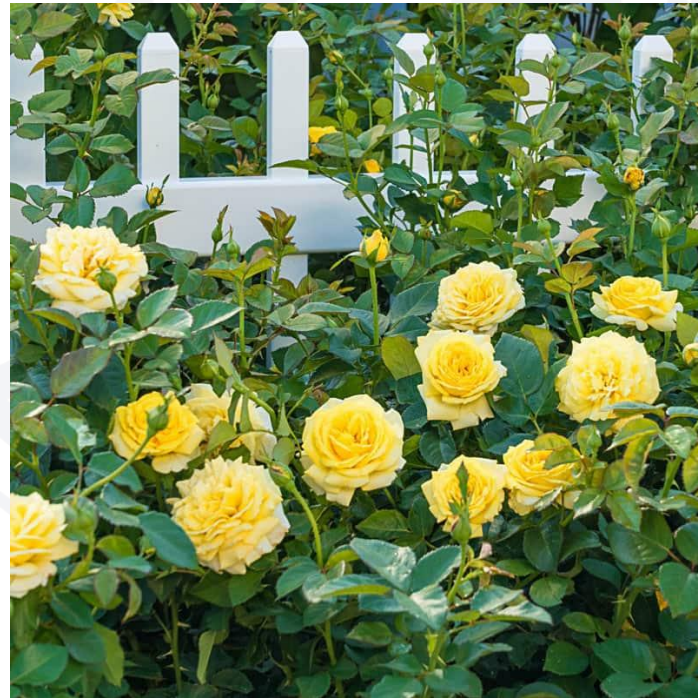


Add an air tag to your safe



CPTED – Crime Prevention Through Environmental Design

- ▶ Rose bushes
- ▶ Bougainvillea
- ▶ Common Holly



Neighborhood Watch

- ▶ Know your neighbors
- ▶ Report suspicious activity
 - ▶ Practice describing people
 - ▶ Practice describing vehicles
 - ▶ Pay attention to street signs and addresses
 - ▶ Look for suspicious behavior
 - ▶ Report immediately to Irvine Police Department
- ▶ Sign up by scanning the QR code



Reporting

- ▶ Call us first at the time of the incident
- ▶ Share with your neighbors
- ▶ Post videos on Ring Neighbors App
- ▶ Use Nextdoor or create your own means of communication with your neighbors



Homeless Outreach

- When we see a homeless person in our community, what should we do?
- What if a homeless person sets up an "encampment" on the sidewalk outside of our HOA, like near Culver & University? Technically, it's on city property, but should we still report it to IPD?
- What if we see someone sleeping in their car that's parked overnight on San Joaquin Drive which is a city street? How should we handle this?

Contact Information

- ▶ Follow Us
 - ▶ Facebook: IrvinePD
 - ▶ Twitter: IrvinePolice
 - ▶ Instagram: irvinepolice
 - ▶ Web page: irvinepd.org
- ▶ Irvine Police Department – Non Emergency 949-724-7000
- ▶ In an emergency call 911